



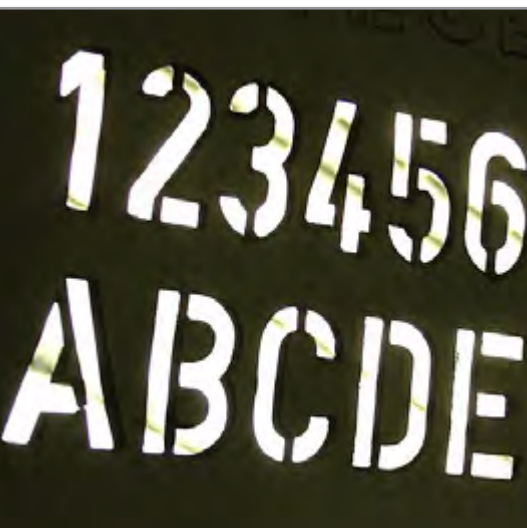
# LSM 700

professional laser marking

## LSM 700

The new laser marking system LSM 700 is the ideal entry into professional laser marking at an excellent priceperformance ratio.

Air-cooling and the abandonment of commodities enable a maintenance-free operation. Moreover the system is characterized by its long lifetime and its high processing quality.



### Applications

- Marking
- Laser engraving
- Laser cutting

### Specifications

Type	Fiber laser
Performance	10 W / 20 W / 30 W / 50 W
Marking window	110 x 110 mm
Wave length	1.060 – 1.085 nm
Pulse frequency	20 - 100 kHz
Operation temperature	0 - 40°C
Cooling	Fan
Energy consumption	approx. 180 W
Dimension	1000 x 740 x 940 mm

### Basic equipment

- Laser source with 2-axes deflection unit and control board
- USB connection, Networkable
- Lights „Laser active“
- Key switch to activate the laser
- Incl. connector for the extraction and filter system

### Scope of services

- With integrated touchscreen PC
- Full marking software
- Compact laser protective housing – laser class 1
- Spacious access door

- Window with laser safety glass
- Pilot laser for easy positioning of layouts
- Manual access door with safety switch
- Electric height extension with measuring scale
- Highest flexibility due to mounting table with T-slots
- Prepared for connection to an extraction and filter system
- Basis laser with 2-axes deflection unit and control card
- 3 USB ports
- Networkability (RJ45)
- Illuminated displays and pushbuttons ergonomically accessible
- Key switch to activate the laser

## Software

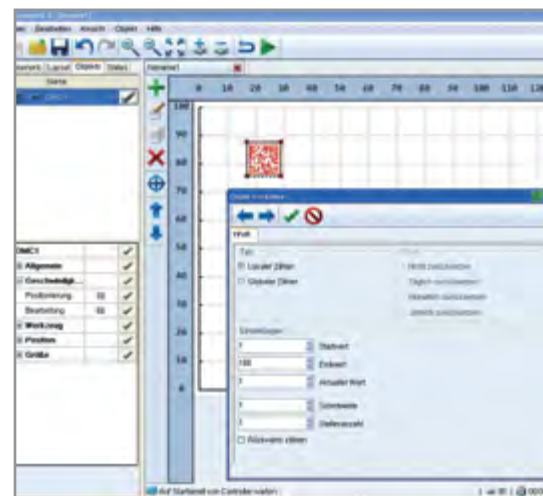
The Windows-based software provided along with the delivery of the laser system enables a comfortable setting of the marking parameters, such as power, speed and frequency.

The software supports:

- Text, True type fonts, Windows fonts
- Variables
- Datamatrix code
- Barcode
- Graphics (e.g. DXF, BMP, PCX, HPGL, JPG, GIF)
- Creation of logos (vector function)
- Automatic date, serial numbers etc.

## Options

- Electric lift gate
- Extraction and filter system Mini / Basic
- Extraction and filter system according to your requirements
- Swivelling rotary device with three-jaw chuck
- Base frame with rollers
- Programmable height extension
- Focus finder (crossed red dot laser)
- Enlarged marking window 180 x180 mm or 205x205 mm
- Cw laser unpulsed
- CO2 laser
- YV04 laser





## Sample parts

